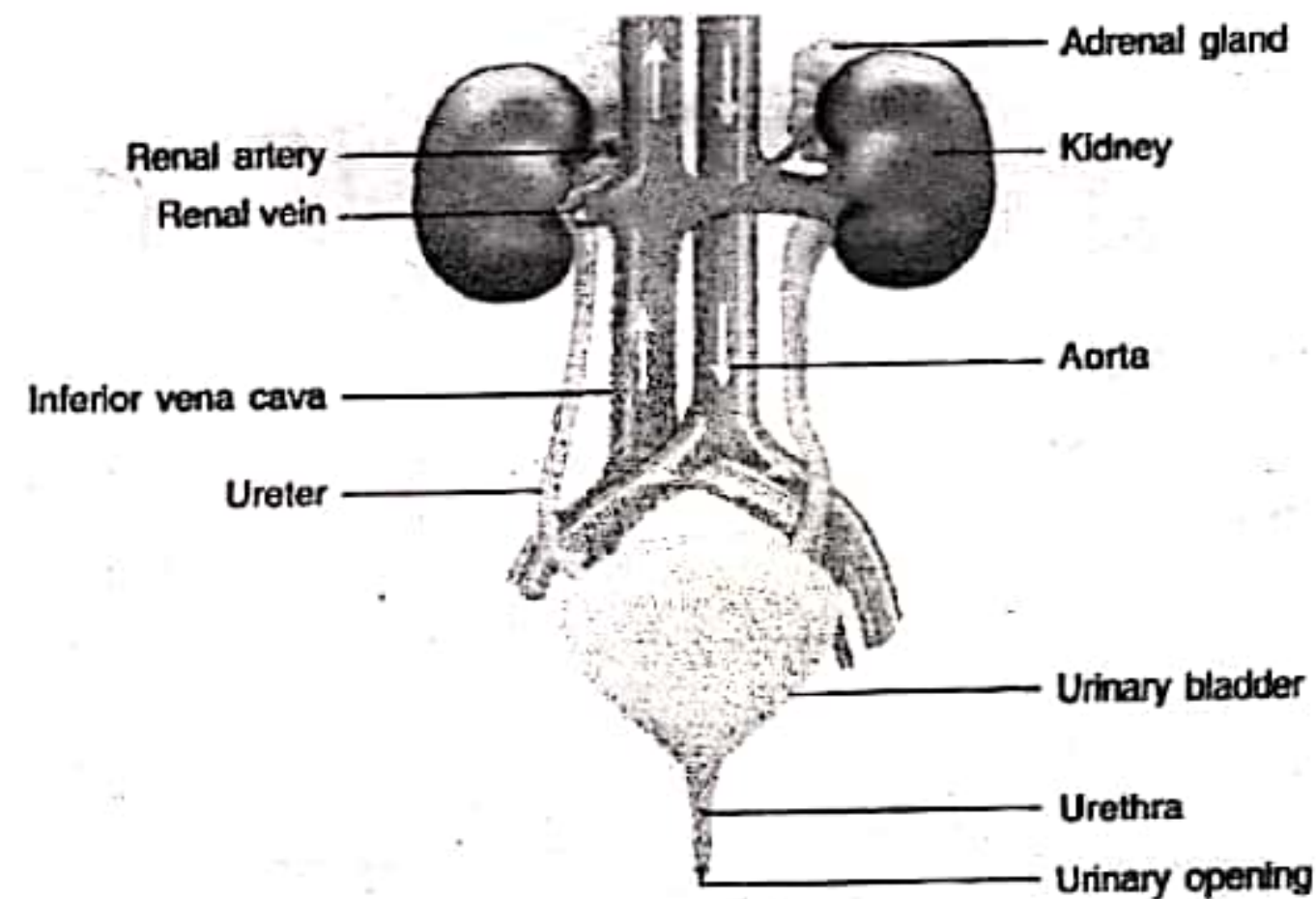


EXCRETION

- The process of the removal of the harmful metabolic wastes from the body.
- Excretory system of human beings includes :

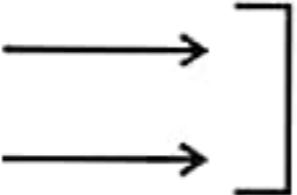
- 1) A pair of kidneys
- ii) A Urinary Bladder
- iii) A pair of Ureter
- iv) A Urethra



- Urine produced in the kidneys passes through the ureters into the urinary bladder where it is stored until it is released through the urethra.
- The purpose of making urine is to filter out waste product from the blood i.e., urea which is produced in the liver.
- Each kidney has large numbers of filtration units called nephrons.
- The Urine formation involves three steps
 1. **Glomerular Filtration** : Nitrogenous wastes, glucose water, amino acid filter from the blood into Bowman Capsule of the nephron.
 2. **Tubular reabsorption** : Now, useful substances from the filtrate are reabsorbed back by capillaries surrounding the nephron.
 3. **Secretion** Extra, water, salts are secreted into the tubule which open up into the collecting duct & then into the ureter.

- Haemodialysis : The process of purifying blood by an artificial kidney. it is meant for Kidney failure patient.

Excretion in Plants

- Oxygen, CO₂ & H₂O  Through stomata
(Transpiration)
- Other wastes may be stored in leaves, bark etc. which fall off from the plant.
- Plants excrete some waste into the soil around them.
- Gums, Resin In old Xylem
- Some metabolic wastes in the form of crystals of Calcium oxalates in the leaves of colocasia and stem of Zamikand.